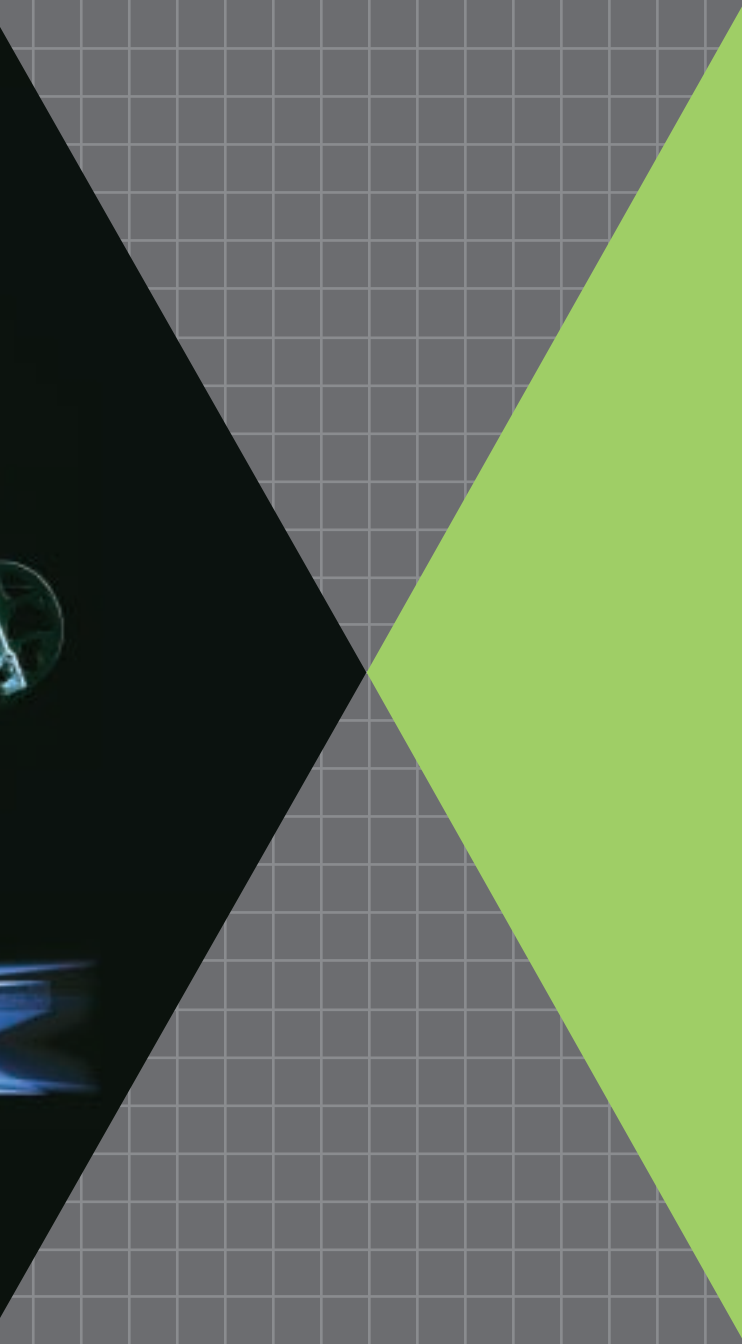


STRYKER



## **WARNING: GENERATES TESTOSTERONE!**

The Stryker Crossbow generates testosterone. Do not use this crossbow if you plan to participate in any kind of athletic drug testing. Use of this crossbow will absolutely, definitely result in a positive test. In fact, standing in the same room or even just thinking about the Stryker has been known to elevate testosterone levels. After all, it is a performance enhancing device.

## **DANGER: HIGHLY EXPLOSIVE!**

This product is extremely volatile! The Stryker Crossbow cranks out a 16-3/4 inch power stroke. That's 20% more string travel than any other crossbow on the market, producing 155 ft/lbs of kinetic energy. That's 70% more than the nearest competitor. It's enough power to take down several makes of European cars. In fact, a Stryker 425 gr bolt still has 56% more energy at 25 yards than any other competitor has at the get go.

## **ALERT: MIND-NUMBING SPEED!**

The Stryker Crossbow reaches speeds of 405 feet per second. That's fast. Bonneville Salt Flats fast. Fast enough to reach a target in the next county before you finish squeezing the trigger. Fast enough to send our engineer from the room drooling and babbling incoherently. Faster than a cat in a room full of rocking chairs. And with this kind of speed comes accuracy because nothing has time to interfere. Not wind. Not weather. Not even gravity.

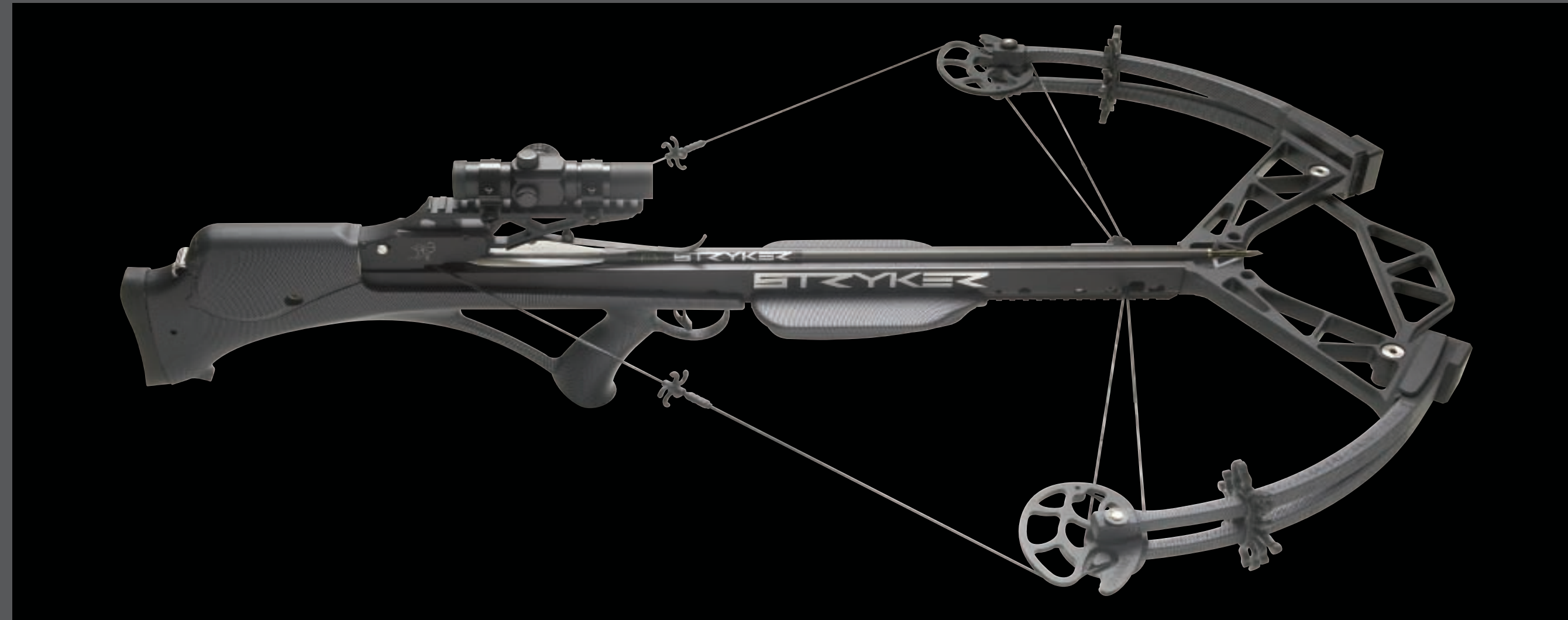
## **CAUTION: HIGHLY SENSITIVE TECHNOLOGY!**

Owning a Stryker carries additional responsibilities typically associated only with classified instrumentation. Binary Cam and Horizontal Force Technologies result in reduced shock and less noise. Highly efficient wrapped split limbs and greater limb angle increase speed, accuracy and durability. And speaking of sensitive, we should warn you that the Stryker may send the competition home crying to mommy.



**WARNING:**

DO NOT ATTEMPT TO  
OPERATE THE STRYKER  
CROSSBOW BEFORE  
READING THE FOLLOWING  
PRECAUTIONS!!!



**ADDITIONAL FEATURES:**

- » Easy cocking and de-cocking process.
- » Cocking device components housed inside the bow.
- » Military standard Weaver rail allows for after market accessories like flashlights, bipods, laser sights, and pistol grips.
- » Foregrip is adjustable and/or removable.
- » Fixed scope rail for improved repeatability and durability. Position & height optimized for both ergonomics and ballistics.
- » Patent pending bolt sensor resets the safety any time a bolt is removed eliminating the possibility of a dry fire.
- » Needle roller bearings in the Binary Cams.
- » Package includes: Multiple Reticle Red-Dot 1x30 Scope, 4 Matched Bolts, Hard Carrying Case, Detachable Sling, Hip Quiver and Extra String.

C O C K » L O A D » S Q U E E Z E » G A M E O V E R

INNOVATION FROM » BOWTECH



# STRYKER

C O C K >> L O A D >> S Q U E E Z E >> G A M E O V E R

STRYKERX30W.COM

STRYKER MANUFACTURING >> 888.689.1289 >> 990 BETHEL DRIVE, UNIT B >> EUGENE, OR 97402